

The Highlands at Faxon Woods

INTERIOR FEATURES

- Balcony
- Ceramic-tiled bathroom(s)
- Dishwasher
- Elevator access to all floors
- Full-size washer and dryer
- Garbage disposal
- Individually controlled heat and A/C
- Intrusion alarm
- Self-cleaning range
- Spacious kitchen
- Thermo-paned windows
- Walk-in closets

AMENITIES

- Business center and conference room
- Card and billiard room
- Children's playroom
- Garage parking available
- Gazebo
- Great room with fireplace
- Library
- State-of-the-art fitness center

A new standard of living

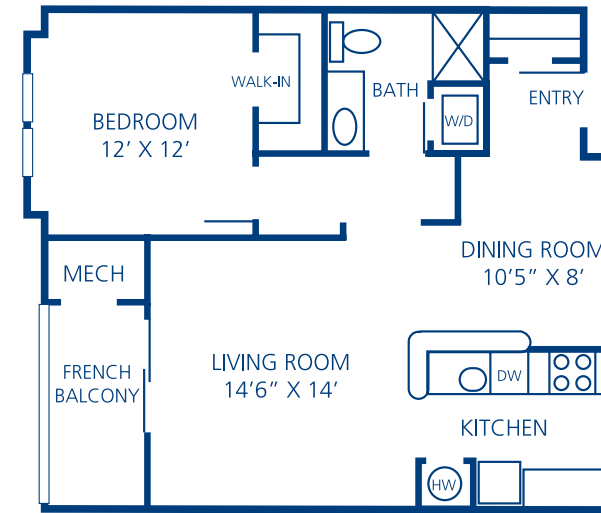
The Highlands at Faxon Woods is an exclusive community that offers 196 apartment homes designed to exceed expectations. Our vibrant community promises a lifestyle adorned with only the finest amenities and a location that puts you at the center of it all. Ideally positioned in historic Quincy, Massachusetts, residents enjoy a secluded courtyard-garden setting that offers stunning views of Faxon Park and the Atlantic Ocean.

Our one and two bedroom apartment homes are graciously designed with luxurious features and breathtaking views.

The Highlands at Faxon Woods caters to your every need with singular amenities, world-class décor and responsive service.

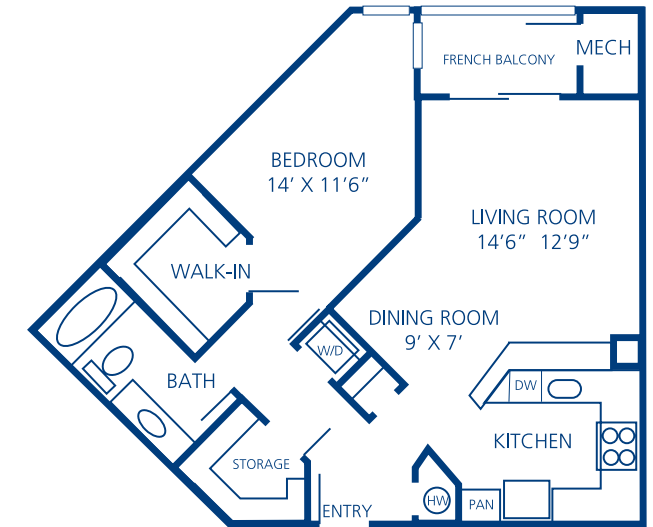
Turn the lifestyle of your dreams into a reality!

FLOOR PLANS



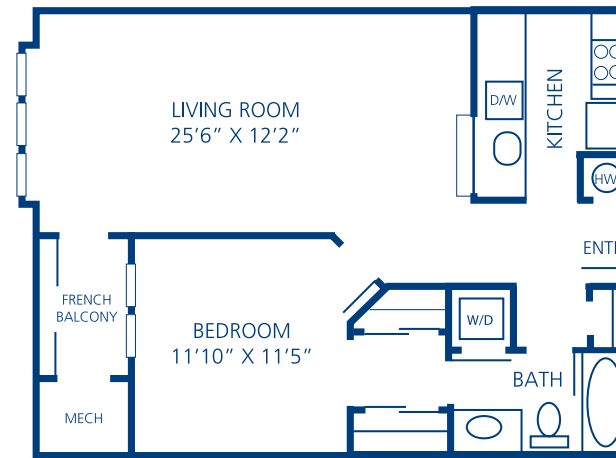
A-1

1 Bedroom/ 1 Bath
760 Square Feet



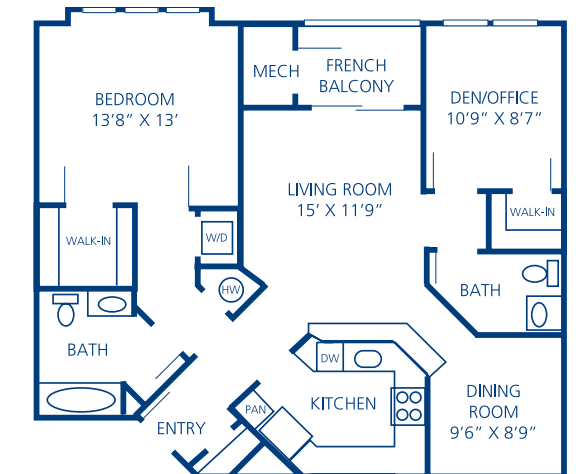
A-3

1 Bedroom/ 1 Bath
810 Square Feet



A-2

1 Bedroom/ 1 Bath
795 Square Feet



B-1

1 Bedroom/ Den/ 1.5 Baths
1,000 Square Feet



LOCATION



The Highlands at Faxon Woods

2001 Falls Boulevard
 Quincy, MA 02169
 Phone: 617.328.7900
 Fax: 617.328.7907
faxonwoodsapts@northland.com



www.northland.com

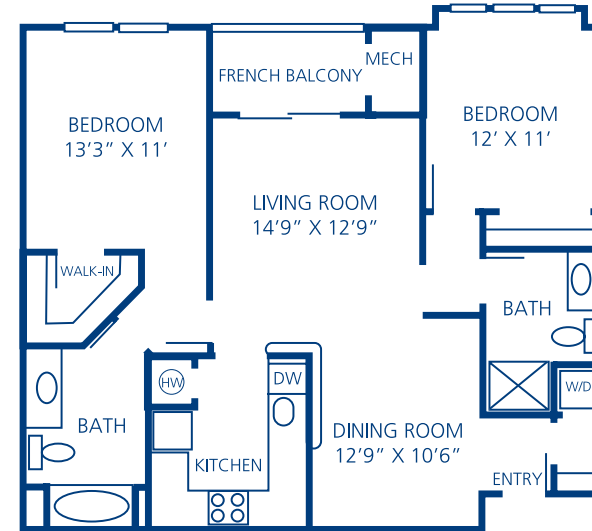
AREA ATTRACTIONS

- Blue Hills Reservation
- F1 Boston
- Gillette Stadium
- Granite Links Golf Club
- Marina Bay
- Presidents Golf Course
- South Shore Mall
- Thomas Crane Public Library
- Wollaston Beach

Boston

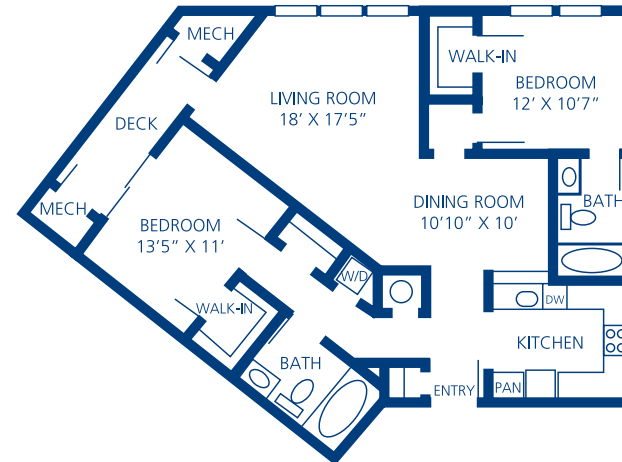
- Boston Common and Public Gardens
- Boston Duck Tours
- Faneuil Hall Marketplace
- Fenway Park
- Freedom Trail
- John F. Kennedy Presidential Library & Museum
- Museum of Science
- Newbury Street
- New England Aquarium
- North End
- Prudential Center Mall
- Symphony Hall
- TD Banknorth Garden
- The Citi Performing Arts Center

FLOOR PLANS



B-2

2 Bedrooms/ 2 Baths
 1,045 Square Feet



B-3

2 Bedrooms/ 2 Baths
 1,140 Square Feet

Providing Comfort, Convenience
 and
 Customer Service